

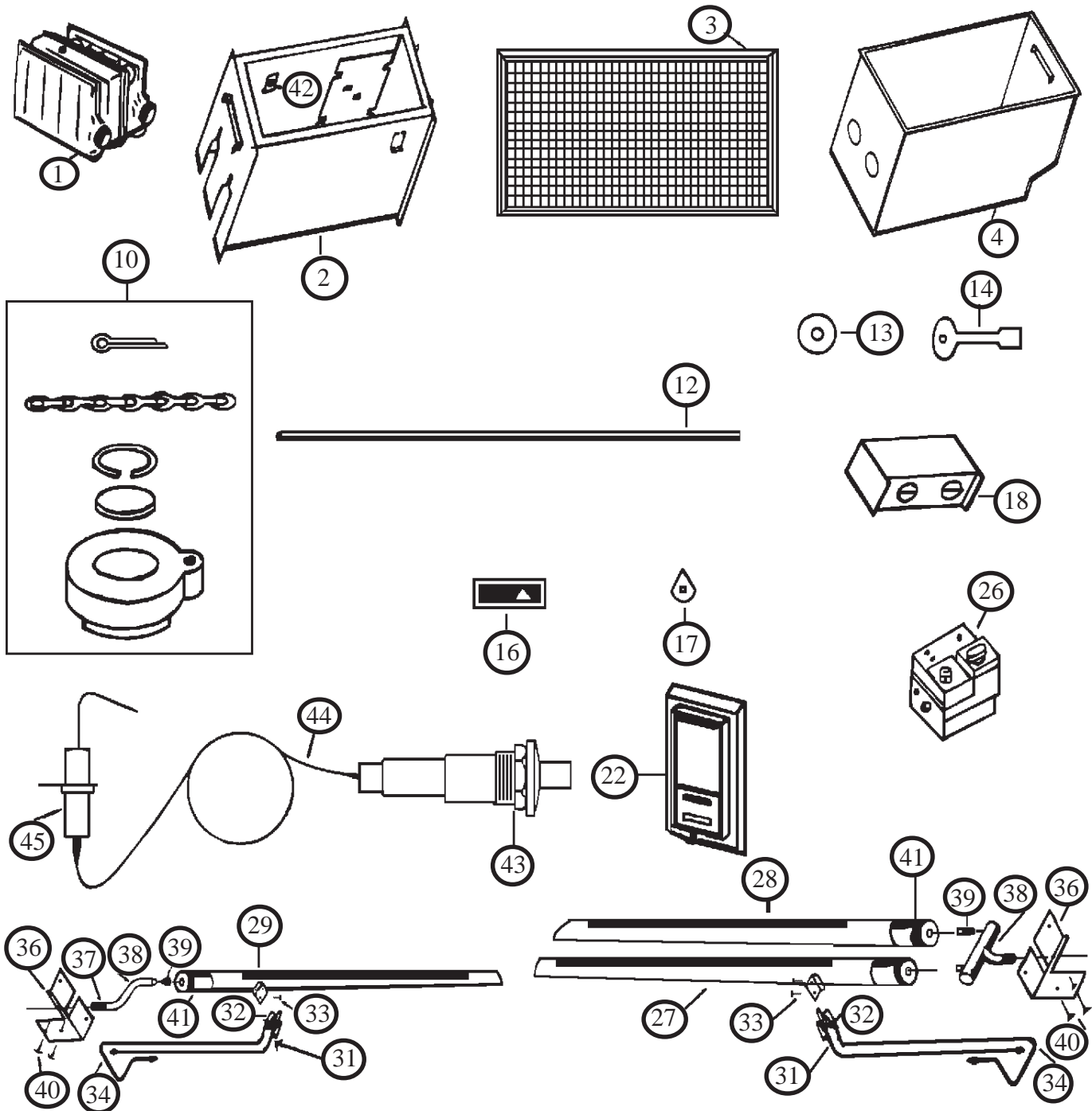


MODELS INCLUDED:

- 90N30A NAT.
- 90N50A NAT.
- 90N65A NAT.
- 90N75A NAT.

GAS FLOOR FURNACE LIST PRICES

Prices and specifications subject to change without notice. All prices are F.O.B. factory. Specify model number when ordering parts.



BURNER ASSEMBLY FOR:
90N30A 90N50A 90N65A

BURNER ASSEMBLY FOR:
90N75A

ATTN: Contractors and Service Technicians, we only sell parts through our wholesalers, but the prices listed are for your convenience. For prompt parts service, contact the wholesaler from which you purchased your Cozy heater. **NOTE:** Parts & schematic drawings on current models are shown at www.cozyheaters.com.

MARCH 2007

HOW TO PROPERLY ORDER PARTS: In addition to part description and part number, please give model number, serial number, and type of gas used. This information can be found on the rating plate that is attached to heater.

MODEL NUMBER	NAT.	90N30A		90N50A		90N65A		90N75A	
	REF. NO.	PART NO.	LIST PRICE	PART NO.	LIST PRICE	PART NO.	LIST PRICE	PART NO.	LIST PRICE
Heat Exchanger w/Gasket	1	23074	\$ 241.00	24099	\$ 340.20	24499	\$ 387.90	24699	\$ 432.80
Gasket, Heat Exchanger	N/A	74530	\$ 4.90	74530	\$ 4.90	74532	\$ 6.90	74535	\$ 8.50
Liner, Complete Assembly	2	23001	\$ 195.90	23980	\$ 174.00	24380	\$ 188.20	24580	\$ 237.10
Grille, Floor	3	23145	\$ 166.30	24175	\$ 211.30	24475	\$ 269.30	24675	\$ 315.70
Casing, Complete Assembly	4	23040	\$ 186.90	24002	\$ 213.90	24402	\$ 246.10	24602	\$ 265.40
Vision Cap, Complete Assy.	10	24048	\$ 16.50	24048	\$ 16.50	24048	\$ 16.50	24048	\$ 16.50
Lighter Rod	11	74510	\$ 2.40	74510	\$ 2.40	74510	\$ 2.40	74510	\$ 2.40
Valve Rod	12	24035	\$ 4.30	24035	\$ 4.30	24035	\$ 4.30	24642	\$ 4.40
Washer, Valve Rod	13	24044	\$ 1.50	24044	\$ 1.50	24044	\$ 1.50	24044	\$ 1.50
Key, Furnace	14	74205	\$ 1.50	74205	\$ 1.50	74205	\$ 1.50	74205	\$ 1.50
Instruction Plate, Lighting	16	91256	\$ 5.30	91256	\$ 5.30	91256	\$ 5.30	91256	\$ 5.30
Valve Rod Indicator Plate	17	24045	\$ 2.20	24045	\$ 2.20	24045	\$ 2.20	24045	\$ 2.20
Draft Hood Assembly w/Gasket	18	23200	\$ 86.90	24075	\$ 94.80	24477	\$ 98.00	24676	\$ 103.40
Draft Hood Gasket w/Screws	19	23225	\$ 4.30	24077	\$ 5.60	24077	\$ 5.60	24077	\$ 5.60
Thermostat, Millivolt	22	74592	\$ 23.40	74592	\$ 23.40	74592	\$ 23.40	74592	\$ 23.40
Wire, Thermostat 20'	23	74518	\$ 1.60	74518	\$ 1.60	74518	\$ 1.60	74518	\$ 1.60
Staples, Thermostat Wire	24	74209	\$ 1.50	74209	\$ 1.50	74209	\$ 1.50	74209	\$ 1.50
Valve, VS821A1061 Nat.W/74414 Bushing	26 & 37	74315	\$ 192.00	74315	\$ 192.00	74315	\$ 192.00	74315	\$ 192.00
Disappearing Bushing 1/4x3/8	37	74414	\$ 2.30	74414	\$ 2.30	74414	\$ 2.30	74414	\$ 2.30
L.P. Conversion Kit	N/A	49200	\$ 26.50	49210	\$ 26.50	49220	\$ 26.50	49330	\$ 26.50
Left Burner w/Pilot Bracket 75	27	N/A	N/A	N/A	N/A	N/A	N/A	74403	\$ 27.80
Right Burner 75	28	N/A	N/A	N/A	N/A	N/A	N/A	74404	\$ 25.50
Burner w/Pilot Brkt. & Air Adj.	29	74401	\$ 26.00	74401	\$ 26.00	74402	\$ 28.50	N/A	N/A
Pilot Generator, Q313A1014 M.V.	31	70098	\$ 37.70	70098	\$ 37.70	70098	\$ 37.70	70098	\$ 37.70
Pilot Burner w/Orifice Q350A1271 N.	32	74410	\$ 11.40	74410	\$ 11.40	74410	\$ 11.40	74410	\$ 11.40
Pilot Burner w/Orifice Q350A1589 LP	32	74415	\$ 11.40	74415	\$ 11.40	74415	\$ 11.40	74415	\$ 11.40
Mounting Screws, Pilot (2)	33	50107	\$ 1.50	50107	\$ 1.50	50107	\$ 1.50	50107	\$ 1.50
Pilot Tubing w/Fittings	34	74452	\$ 8.20	74452	\$ 8.20	74452	\$ 8.20	74452	\$ 8.20
Burner Support, Front	36	24036	\$ 6.00	24036	\$ 6.00	24036	\$ 6.00	24036	\$ 6.00
Burner Support, Rear	N/A	24038	\$ 3.00	24038	\$ 3.00	24430	\$ 3.40	24627	\$ 4.00
Manifold	38	74416	\$ 7.80	74416	\$ 7.80	74416	\$ 7.80	74412	\$ 28.00
Burner Orifice, Natural Gas	39	74390	\$ 4.00	74406	\$ 4.00	74407	\$ 4.00	*74408	\$ 4.00
Burner Orifice, L.P. Gas	39	74609	\$ 4.00	74606	\$ 4.00	74607	\$ 4.00	*74608	\$ 4.00
Warning Flag	41	24068	\$ 11.40	24068	\$ 11.40	24068	\$ 11.40	24068	\$ 11.40
Limit Control 60T11	42	*74306	\$ 10.90	*74307	\$ 10.90	*74308	\$ 10.90	*74309	\$ 10.90
Wiring Harness	N/A	74320	\$ 9.80	74321	\$ 10.10	74322	\$ 11.10	74323	\$ 11.70
Piezo Ignitor	43	80016	\$ 6.70	80016	\$ 6.70	80016	\$ 6.70	80016	\$ 6.70
Ignitor Wire	44	74351	\$ 6.00	74351	\$ 6.00	74351	\$ 6.00	74351	\$ 6.00
Electrode	45	74350	\$ 4.30	74350	\$ 4.30	74350	\$ 4.30	74350	\$ 4.30
Bottom Burner Cover	N/A	24039	\$ 9.60	24039	\$ 9.60	24431	\$ 12.20	24628	\$ 13.70

* = Requires 2

ATTN: Contractors and Service Technicians, we only sell parts through our wholesalers, but the prices listed above are for your convenience. For prompt parts service, contact the wholesaler from which you purchased your Cozy heater. **NOTE:** Parts & schematic drawings on current models are shown at www.cozyheaters.com.

Prices and specifications subject to change without notice. All prices are F.O.B. factory.

* REQUIRES 2

P/N 74521

MARCH 2011